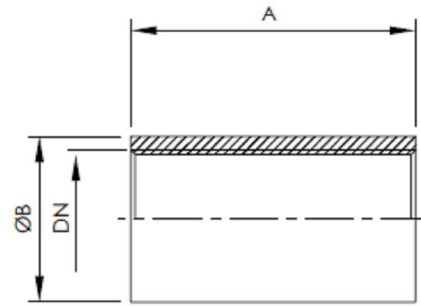


## Manicotto filettato femmina gas

Full coupling

ISO Innengewinde

DN	A	B
1/4"	18	18
3/8"	20	22
1/2"	25	25
3/4"	30	34
1"	35	40
1 1/4"	40	48.5
1 1/2"	40	55
2"	45	70.5
2 1/2"	50	83
3"	50	99.5
3 1/2"	50	110
4"	50	114.3
5"	50	139.7

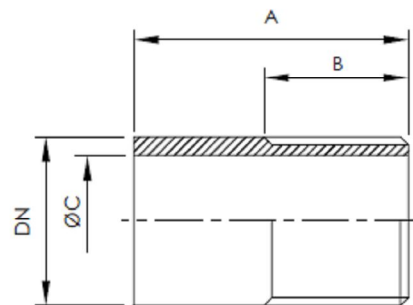


## Tronchetto a saldare maschio gas

Weld nipple

ISO Außengewinde

DN	A	A	A
1/4"	20	11	10.5
3/8"	20	11	12
1/2"	25	16	16.5
3/4"	30	16	21.5
1"	35	16	28
1 1/4"	35	16	36
1 1/2"	40	20	42
2"	45	23	53.5
2 1/2"	45	23	68.5
3"	50	26	80
3 1/2"	50	26	94
4"	50	26	108
5"	50	26	133

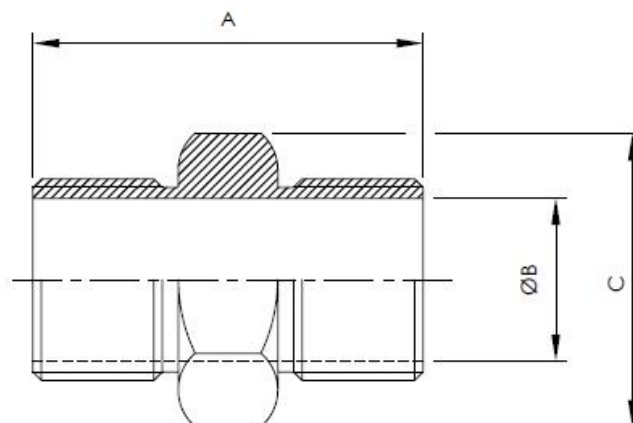


## Niplo

Hexagonal nipple

Sechskant Nippel

DN	A	B	C
1/4"	31	9	19
3/8"	34	11	22
1/2"	38	15	27
3/4"	42	20	32
1"	46	25	41
1 1/4"	52	32	50
1 1/2"	55	38	55
2"	60	50	70

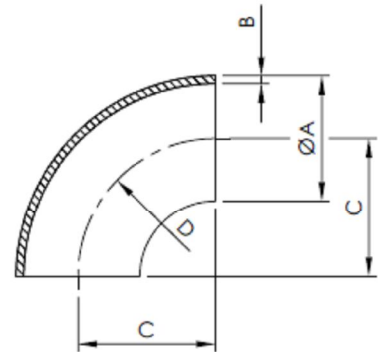


## Curva a saldare 90° DIN

90° DIN welding bend

DIN 90° Schweißbogen

DN	A	B	C	D
10	12	1	26	26
15	18	1	35	35
20	22	1	40	40
25	28	1,5	50	50
32	34	1,5	55	55
40	40	1,5	60	60
50	52	1,5	70	70
65	70	2	80	80
80	85	2	90	90
100	104	2	100	100
125	129	2	185	185
150	154	2	215	215

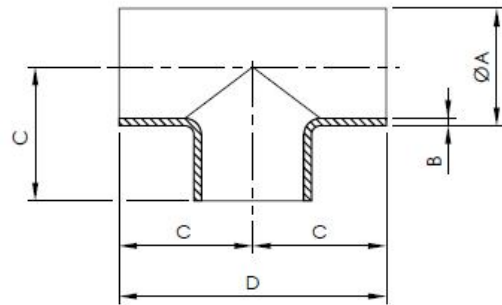


## TEE a saldare DIN

DIN welding tee

Schweiß - T.Stück DIN

DN	A	B	C	D
10	12	1	26	52
15	18	1,5	43	70
20	22	1,5	40	80
25	28	1,5	50	100
32	34	1,5	55	110
40	40	1,5	60	120
50	52	1,5	70	140
65	70	1,5	80	160
80	85	2	90	180
100	101.6	2	100	200
125	129	2	125	250
150	154	2	150	300

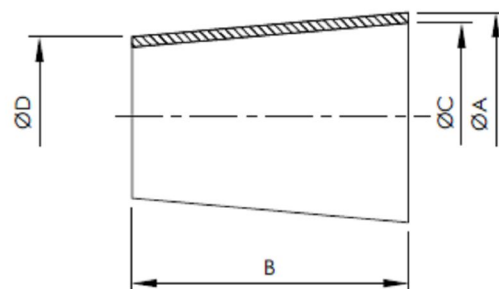


## Riduzione concentrica a saldare DIN

Concentric reducing socket DIN

DIN Anschw. Reduzierstück

DN	A	B	C	D
32/25	34	67	31	28
40/25	40	67	37	28
40/32	40	67	37	34
50/25	52	67	49	28
50/32	52	67	49	34
50/40	52	67	49	40
65/40	70	67	66	40
65/50	70	67	66	52
80/50	85	67	81	52
80/65	85	67	81	70
100/65	104	67	100	70
100/80	104	67	100	85
101/80	101.6	67	97.6	85

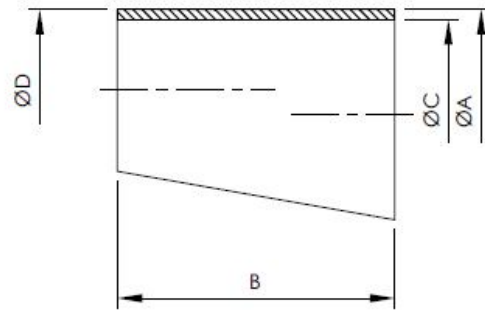


## Riduzione eccentrica a saldare DIN

Welding eccentric reducer DIN

DIN Reduzierstück exz. SS

DN	A	B	C	D
32/25	34	67	31	28
40/25	40	67	37	28
40/32	40	67	37	34
50/25	52	67	49	28
50/32	52	67	49	34
50/40	52	67	49	40
65/40	70	67	66	40
65/50	70	67	66	52
80/50	85	67	81	52
80/65	85	67	81	70
100/65	104	67	100	70
100/80	104	67	100	85
101/80	101.6	67	97.6	85

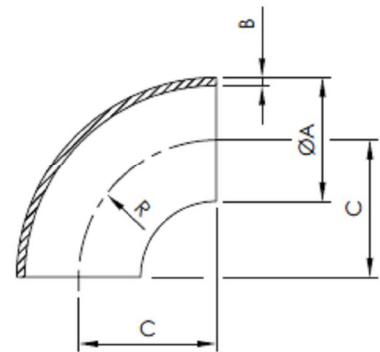


## Curva 90° a saldare SMS

90° SMS welding bend

SMS 90° Schweißbogen

DN	A	B	C	R
25	25.4	1.5	38	38
38	38.1	1.5	57	57
51	50.8	1.5	76	76
63	63.5	1.5	95	95
76	76.2	2	114	114
104	104	2	110	110

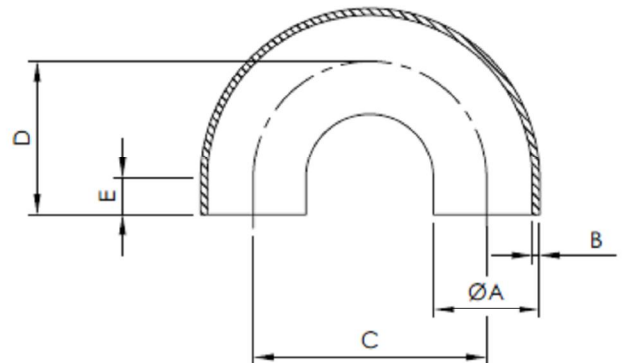


## Curva 180° a saldare SMS

180° SMS welding bend

SMS 180° Schweißbogen

DN	A	B	C	D	E
25	25.4	1.5	81	75	22
38	38.1	1.5	104	90	35
51	50.8	1.5	143	100	47.5
63	63.5	1.5	168	115	60
76	76.2	2	171	130	72.2
104	104	2	220	150	100

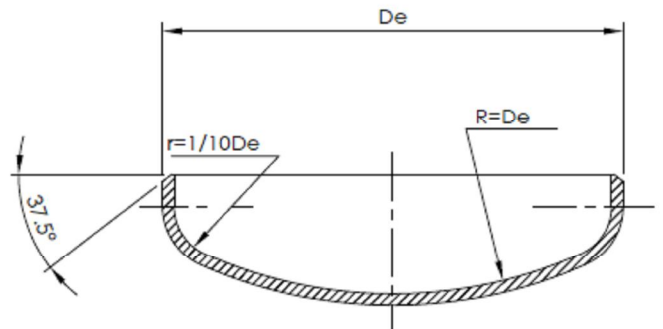


## Fondello bombato

Convex bottom, tube as per ISO

Gewölbter Boden/ISO - Rohr

DN-ISO	Gas-ASA	De	Sp
15	1/2"	21.3	1.5-2-2.5
20	3/4"	26.9	1.5-2-2.5-3
25	1"	33.7	1.5-2-2.5-3
32	1 1/4"	42.4	1.5-2-2.5-3
40	1 1/2"	48.3	1.5-2-2.5-3
50	2"	60.3	2-2.5-3-3.5
65	2 1/2"	76.1	2-2.5-3-3.5
80	3"	88.9	2-2.5-3-3.5
90	3 1/2"	101.6	2-2.5-3-3.5
100	4"	114.3	2-2.5-3-3.5
125	5"	139.7	2-2.5-3-3.5-4
150	6"	168.3	2-2.5-3-3.5-4
200	8"	219.1	2.5-3-3.5-4-5

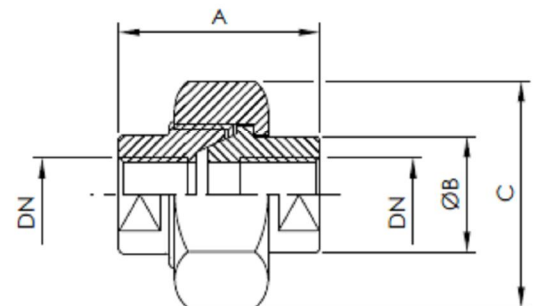


## Raccordo a 3 pezzi a sede conica

Conical union seat F/F

Anschluss Kegelformige

DN	A	B	C
1/4"	42	19	32
3/8"	45	23	36
1/2"	48	28	46
3/4"	52	34	50
1"	58	40	55
1 1/4"	65	50	70
1 1/2"	70	56	75
2"	78	70	90

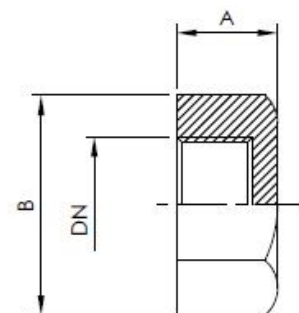


## Tappo femmina

Hexagonal cap

Gewindegesschnittene Deckelnut

DN	A	B
1/4"	14	19
3/8"	16	22
1/2"	17	27
3/4"	20	32
1"	22	41
1 1/4"	24	50
1 1/2"	27	55
2"	30	70



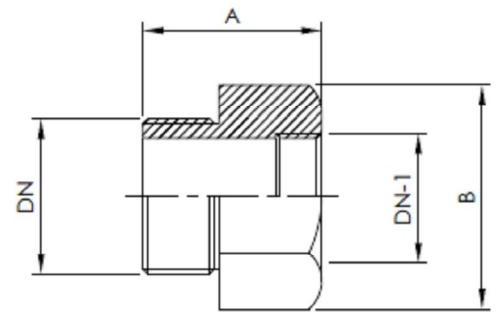


## Riduzione maschio - femmina

Male-female reduction

Reduzierstück Innen-Außengewinde

DN	DN-1	A	B
1/4"	1/8"	19	19
3/8"	1/4"	21	22
1/2"	3/8"	24	27
3/4"	1/2"	27	32
1"	3/4"	29	41
1 1/4"	1"	33	50
1 1/2"	1 1/4"	35	55
2"	1 1/2"	38	70

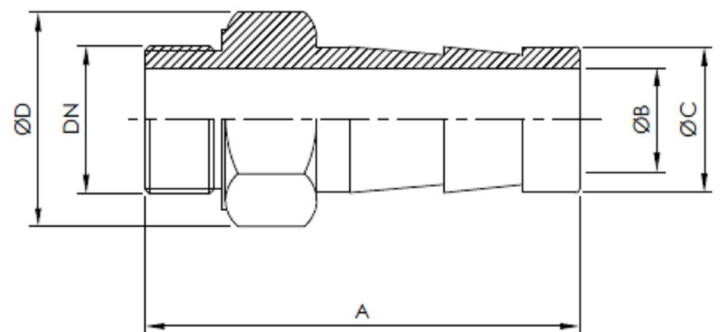


## Portagomma maschio

Hose nipple

ISO Schlauchkegelstutzen

DN	A	B	C	D
1/4"	45	9	13	19
3/8"	51	11	17	22
1/2"	59	15	21	27
3/4"	67	20	27	32
1"	75	25	33	41
1 1/4"	82	32	42	50
1 1/2"	90	40	48	55
2"	103	50	60	70

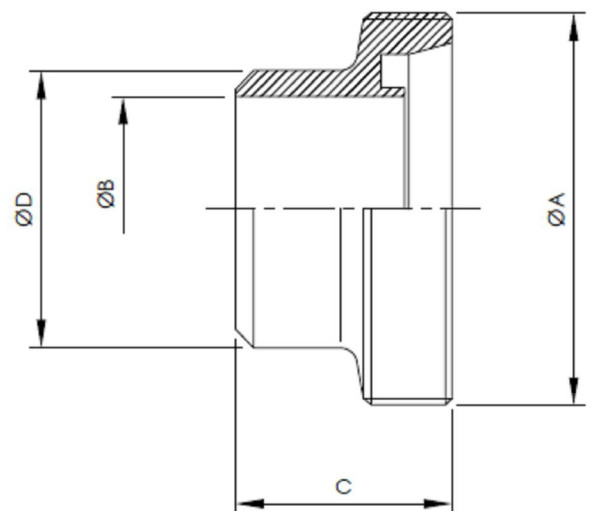


## Femmina a saldare DIN

DIN Welding male

DIN S-Gewindestutzen

DN	A	B	C	D
10	Rd28x1/8"	10	21	15
15	Rd34x1/8"	16	21	21
20	Rd44x1/6"	20	24	25
25	Rd52x1/6"	26	29	31
32	Rd58x1/6"	32	32	37
40	Rd65x1/6"	38	33	43
50	Rd78x1/6"	50	35	55
60	Rd84,5x1/6"	57	36	68
65	Rd95x1/6"	66	40	72
80	Rd110x1/4"	81	45	87
100	Rd130x1/4"	100	54	106
125	Rd160x1/4"	125	46	132
150	Rd190x1/4"	150	50	157

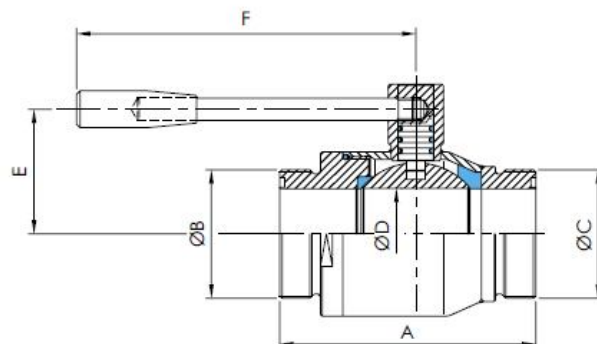


## Valvola a sfera RS attacchi filettati SMS

RS ball valve SMS male ends

RS Kugelventil SMS G/G

DN	A	B	C	D	E	F
25	86	40x1/6"	24	44	146	
38	127	60x1/6"	40	64	185	
51	137	70x1/6"	49.5	68	185	
63	161	85x1/6"	57.5	73	205	
76	180	98x1/6"	69	95	243	
104	204	125x1/6"	99	122	273	

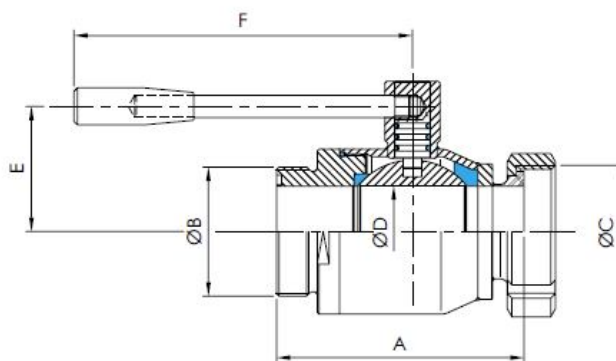


## Valvola a sfera RS maschio girella SMS - filetto SMS

RS ball valve SMS nut and liner - male end

RS Kugelventil SMS KM/G

DN	A	B	C	D	E	F
25	86	40x1/6"	24	44	146	
38	127	60x1/6"	40	64	185	
51	137	70x1/6"	49.5	68	185	
63	161	85x1/6"	57.5	73	205	
76	180	98x1/6"	69	95	243	
104	204	125x1/6"	99	122	273	



## Valvola a sfera RS a saldare SMS

RS ball valve welding ends

RS Kugelventil SMS S/S

DN	A	B	C	D	E	F
25	86	28	28	24	44	146
38	127	38	38	40	64	185
51	137	51	51	49.5	68	185
63	161	64	64	57.5	73	205
76	180	76.5	76.5	69	95	243
104	204	104	104	99	122	273

